



Welcome!

**Festival
of
Inclusion**

Festival of Inclusion



An interactive day of fun & acceptance for the whole family!

Saturday, March 1, 2025

11:00 AM – 2:00 PM

80+ interactive community stations

Sports & fitness activities

Sensory-friendly activities

Emergency vehicles to explore

Virtual reality

Adaptive equipment demos

Therapeutic animals

College programs

Medical specialists

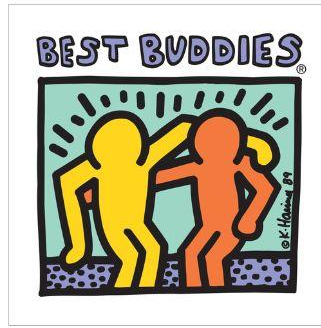
Photo booth

FOUNDATION
Golisano
Imagine the possibilities!

AI
Sigl
Community
of Agencies

greater rochester
Health foundation

McCarthy
Tents & Events



Wegmans
100

Thank You
to our 2025 Festival of Inclusion
Sponsors!



Special
Olympics
New York

LAKEVIEW
VALET



Food & Drinks

Food trucks/stands located outside the Golisano Training Center:



Snacks and beverages generously donated by **Wegmans**



Festival of Inclusion

Participants

Ability Partners
ACEing Autism
Al Sigi Community of Agencies
Arc Alliance at The Arc of Monroe
Arc of Allegany-Steuben
Arc GLOW
Artists Unlimited
AutismUp
Bella's Bumbas LTD
Best Buddies New York
Camp Puzzle Peace/ Autism Nature Trail
Capt. L J - Tomboy Adventures LLC
Catholic Charities Family and Community Services
Central Library of Rochester & Monroe County
Challenger Miracle Field of Greater Rochester
Children's Institute
Classified Scanning and Shredding
Crutches 4 Africa
CUNY School of Public Health
David's Refuge
Disability EmpowHer Network
Eastman Dental Institute for Oral Health
Empowering People's Independence (EPI)
Endless Highway, Inc. & The Rochester Wheels

Equicenter
Endless Highway, Inc. & The Rochester Wheels
Family Initiative
Flower City Down Syndrome Network
Genesee Land Trust
Genesee Valley Audubon Society
GiGi's Playhouse Rochester
Golisano Institute for Developmental Disability
Nursing
Golisano Restorative Neurological Rehabilitation
Center at Rochester Regional Health
Health Pozitive
Heritage Christian Services
Heritage Christian Stables
Hillside
Holy Childhood
Homesteads for Hope
Krystal's Dance Centre
Lifetime Assistance
Lollypop Farm, Humane Society of Greater
Rochester
Love, Light & Yoga LLC
Mary Cariola Center
Monroe One Educational Center
Navigate MD
Nazareth Best Buddies
NYS Department of Environmental Conservation
NYS Office of Parks, Recreation & Historic
Preservation

Parent to Parent of NYS
Parents Helping Parents Coalition of Monroe
County
Person Centered Services
Pittsford Interact Clubs
Play Palace
Prime Care Coordination
Renew Hope and Healing
RIT Archives StoryBooth
RocDog, Inc.
Rochester Accessible Adventures
Rochester Alternative Baseball
Rochester Rookies Adaptive Track and Field
Rochester Rotary Sunshine Camp
Rochester Special Hockey
Rochester Hearing and Speech Center
School of Rock
Seneca Park Zoo Society
Special Olympics New York
Special Olympics New York - Genesee Region
Spencer Special Needs Consulting Services
Spotted Rabbit Creative Arts Therapy
Starbridge
Stony Point Art Studio
Strike Back Martial Arts
Student Success Project
Syracuse University's InclusiveU

The Arc Chemung-Schuylar
The Arc of Monroe
The Arc Ontario
The Arc Wayne
The Child Advocacy Center of Greater
Rochester
The Hochstein School
The Legal Aid Society of Rochester, NY
Town of Victor Dept. of Parks and Recreation
Trillium Health
UR Medicine - Sheftall Lab
URMC Developmental and Behavioral
Pediatrics & The Strong Center For
Developmental Disabilities
WXX Public Media + Move to Include

Festival of Inclusion

Ability Partners

CP Rochester, Happiness House, & Rochester Rehabilitation

Website: abilitypartners.us Phone: 585-334-6000 Email: dwhitbeck@happinesshouse.org

Ability Partners agencies, including CP Rochester, Happiness House, and Rochester Rehabilitation Center, connect and support a community of leading human service organizations in their pursuit of empowering individuals of all ages and abilities to lead their best lives. Every day, we are guided by ensuring independence, equal opportunity, inclusion, respect, and dignity for all.



Festival of Inclusion

ACEing Autism

Website: www.aceingautism.org Phone: 310-401-0544 Email: info@aceingautism.org

Make tennis available to children with autism and to use tennis as a means to enhance health and fitness, hand-eye coordination, motor development, and social skills for children with autism, while ensuring the kids are having fun in the process!



Festival of Inclusion

AI Sigl

Community of Agencies

Website: alsigl.org/ Phone: 585-442-4102 Email: info@alsigl.org

We're a collaborative community network that provides high-quality, cost-effective real estate and business services, while fostering community awareness and philanthropic support to a growing array of nonprofit organizations that serve children and adults with disabilities and special needs.



Festival of Inclusion

Arc Alliance at The Arc of Monroe

Website: arcmonroe.org/about/arc-alliance-self-advocacy-group/ Phone: 585-271-0660 Email: rfifield@arcmonroe.org

Arc Alliance is a self advocacy group organized by The Arc of Monroe that is comprised of people with disabilities. The group meets monthly to talk about the latest issues that people with disabilities face in their communities, as well as practical solutions to bring meaningful change.

In 2023, the incredible efforts of this group were recognized statewide as Arc Alliance was named Group of the Year for both the Western/Finger Lakes Region and New York State by the Self Advocacy Association of New York State



Festival of Inclusion

Arc GLOW

Website: arcglow.org Phone: (585) 658-2828 Email: lbors@arcglow.org

We are a parent- and family-driven organization that empowers and supports people of all ages with a broad spectrum of emotional, intellectual and developmental disabilities.



GLOW
New York

Festival of Inclusion

Arc of Allegany-Steuben

Website: thearcas.org Phone: 585-593-5700 Email: thearcas@thearcas.org

The Arc Allegany-Steuben is a not-for-profit organization that provides supports and services for people with intellectual and developmental disabilities and their families throughout Allegany and Steuben counties, NY.



Festival of Inclusion

Artists Unlimited



Website: Artistsunlimitedroc.com Phone: 585-219-5188 Email: Artistsunlimitedroc@gmail.com

Artists Unlimited is a 501(c)(3) organization that works primarily with special needs. Our focus is around using theater, music and dance as a way for our members to grow and express themselves. We have a primary show once a year typically in November we also have a secondary performance during the summer, which is focusing around song and dance.



Festival of Inclusion

Autism Up

Website: www.autismup.org Phone: 585-248-9011 Email: Contact@autismup.org

AutismUp is the leading 501(c)3 autism support organization in the Greater Rochester and surrounding areas. Founded in 2004, our mission is to support individuals with Autism Spectrum Disorder, and their families, by expanding and enhancing opportunities to improve quality of life. Parent perspective steers the direction of the organization, with the fiduciary guidance of our Board of Directors. Together, we are providing help for today, and hope for tomorrow.



Festival of Inclusion

Bella's Bumbas LTD

Website: bellasbumbas.com Phone: 585-506-7554 Email: bellasbumbas@gmail.com

We make and GIVE toddler wheelchairs, GLOBAL Mobility is our Mission, the requesting families only pay shipping.



Festival of Inclusion

Best Buddies

Website: <https://www.bestbuddies.org/newyork/> Phone: 585.259.4558 Email: newyork@bestbuddies.org

Best Buddies in New York offers One-to-One Friendship, Integrated Employment, and Leadership Development programs for individuals with and without disabilities.



Festival of Inclusion

Camp Puzzle Peace/ Autism Nature Trail

Website: <https://www.camppuzzlepeace.org/> Phone: 585-371-5018 Email: info@camppuzzlepeace.org

A grassroots non-profit organization created by a collaboration of educators and parents. Our mission is to provide traditional family experiences for families. We are an inclusive organization, and serve families dealing with Autism Spectrum Disorder and other developmental delays as well as families without disabilities through three opportunities - ADK Family Camp, Community Connections, and programming on the Autism Nature Trail.



Festival of Inclusion

Capt. L J - Tomboy Adventures LLC

Website: Captlj.com Phone: 585-269-8125 Email: captlj@captlj.com

Outdoor excursion and instruction company providing boating instruction and guided kayaking, hiking and snowshoeing trips with a focus on history and nature. DEC licensed guide. ACA paddling instructor. USCG Captain



CAPT. LJ
TOMBOY ADVENTURES

Festival of Inclusion

Catholic Charities Family and Community Services

Website: fcscharities.org Phone: 585-546-7220 Email: ccfcs@fcscharities.org

A multi-faceted human services agency serving over 21,000 clients over 12 counties with legacy services that include residential and community services for people with intellectual and developmental disabilities; we also serve adults and children dealing with issues associated with chronic and mental illness, aging, homelessness, and refugee/immigration.

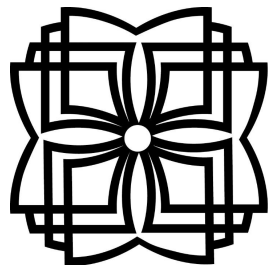


Festival of Inclusion

Central Library of Rochester & Monroe County

Website: roccitylibrary.org Phone: 585-428-7300 Email: childref@libraryweb.org

Public library servicing all ages of the public residing in Rochester and Monroe County.



**Rochester
Public Library**

More Than You Think

Festival of Inclusion

Challenger Miracle Field of Greater Rochester

Website: rochestermiraclefield.org Phone: 585-500-9915 Email: challengerdirector@gmail.com

Challenger Miracle Field of Greater Rochester provides people with developmental, physical, or intellectual disabilities a barrier-free, safe, accessible place to experience the health benefits and joy of play through team sports, recreation, and social events on a year-round basis.



Festival of Inclusion

Children's Institute

Website: <https://www.childrens institute.net> Phone: 585-295-1000 Email: <https://childrens institute.net/contact-us>

Since 1957, Children's Institute (CI) has been serving unmet needs of children, parents, educators, and child-focused providers. Our offerings support children of all ages, facilitating early learning, school readiness, healthy development, and youth leadership by improving quality in home, school, and other community environments. We provide capacity building, consultation, coaching and professional learning for educators to create affirming and culturally responsive learning environments centered on equity-based social emotional learning and restorative instructional practices.



Festival of Inclusion

Classified Scanning and Shredding

Website: <https://www.classifiedscanningshredding.com/> Phone: 585-756-2233 Email: meghan.cacchione@lifetimeassistance.org

We are a division of the non-profit Lifetime Assistance, Inc. We help provide job opportunities for people with disabilities. We offer secure shredding and scanning services to businesses in Rochester, Syracuse and Buffalo. Working with us helps people with disabilities enhance their independence and confidence, while learning both hard and soft work skills.



Festival of Inclusion

Crutches 4 Africa

Website: www.crutches4africa.org Phone: 303-877-2803 Email: c4a@crutches4africa.org

Crutches 4 Africa is a 501c3 non profit organization founded to provide mobility devices to individuals throughout the world who are not able to get an around. We have shipped over 245,000 devices to 26 countries in Africa and 20 other countries around the world.



Festival of Inclusion

CUNY School of Public Health

Website: <https://cunyisph.org/steps2-study/> Phone: 934-226-5720 Email: abigail.lyons@sph.cuny.edu

STEPS2 is a study being done by teachers at the City University of New York (CUNY School of Public Health). The study is funded by the National Institutes of Health (NIH) and will help us to see if our health education curricula help people with I/DD to learn and to choose healthy behaviors.

People aged 16-27 with intellectual or developmental disabilities who join the STEPS2 study will either receive Steps To Your Health (STYH) classes which teach about exercise and nutrition or Socialization To Enhance Participation and Support Sexuality (STEPS2) classes which teach about decision-making, sexual health and healthy relationships. All participants must be okay with doing either program since the toss of a coin will decide which class a participant will get. All classes take place once per week for 6 weeks for up to an hour on the computer (over Zoom or another video conferencing platform).



Festival of Inclusion

David's Refuge

Website: www.DavidsRefuge.Org Phone: 315-682-4204 Email: DavidsRefuge@gmail.com

To provide respite, resources and support to parents and guardians of children with special needs or life threatening medical conditions where they will be refreshed, restored and renewed in their role as caregivers.



Festival of Inclusion

Disability EmpowHer Network

Website: <https://www.disabilityempowhernetwork.org/> Phone: 585-269-9184 Email: empowherroc@disabilityempowhernetwork.org

Disability EmpowHer Network empowers girls and young women with disabilities through mentoring and transformational learning experiences. We recognize that disabled girls have significantly lower high school graduation rates and higher unemployment rates than their nondisabled peers. We also know that girls and women with disabilities are less likely to have successful disabled women mentors. Through multi-stage skill-building, empowerment, and mentoring programs, we address these issues while also empowering disabled young women to live to their fullest potential and have the confidence to lead.



Festival of Inclusion

Eastman Dental Institute for Oral Health

Website: <https://www.urmc.rochester.edu/dentistr> Phone: 509-578-6470 Email: furqan_alwaely@urmc.rochester.edu

At Eastman Dental, we believe in embracing your unique qualities. And if you have a special or complex condition, you need a dentist who understands you. That's why we've created Eastman Dental Specialty Care, an inclusive dental program where you can get the care you need.



Festival of Inclusion

Empowering People's Independence (EPI)

Website: <https://www.epiny.org/> Phone: 585-442-6420 Email: info@epiny.org

EPI provides progressive and comprehensive services for children and adults with Developmental Disabilities, Traumatic Brain Injury and Epilepsy.



Festival of Inclusion

Endless Highway, Inc. & The Rochester Wheels

Website: www.endless-highway.org Phone: 5853138695 Email: info@endless-highway.org

Endless Highway is a disability-led organization expanding access to sports, recreation, arts, and community experiences for people who use mobility devices. Where inaccessible environments, insurance shortfalls, and the high cost of adaptive equipment become barriers to participation, we co-design solutions to break down each barrier in the moment while collaborating with partners to continue pursuing systemic change.

ENDLESS  HIGHWAY



Festival of Inclusion

EquiCenter

Website: www.equicenterny.org Phone: 585 624 7777 Email: info@equicenterny.org

EquiCenter fosters growth, wellness, and educational opportunities for people of all ages and abilities through the power of equestrian, horticultural, and outdoor experiences.



Festival of Inclusion

Family Initiative

Website: www.fi-florida.org Phone: 239-910-0712 Email: info@fi-florida.org

Family Initiative is a Florida based nonprofit providing compassionate and innovative services to individuals with autism from infancy through adulthood. Our continuum of care includes community programs, family programs and training, clinical services, education, and advocacy.



Festival of Inclusion

Flower City Down Syndrome Network

Website: www.fcdsn.com Phone: 585-568-7421 Email: fcdsn21@gmail.com

Our mission is to provide education, support, and opportunities to people with Down syndrome and their families. We operate in the Greater Rochester area since 1991 and are a network of families, professionals, self-advocates, and friends who all share in the joys and challenges of a Down syndrome diagnosis.



FLOWER CITY
DOWN SYNDROME NETWORK

Festival of Inclusion

Genesee Land Trust

Website: www.geneseeandtrust.org Phone: 585-256-2130 Email: info@geneseeandtrust.org

Genesee Land Trust protects local lands to help wildlife, support farming, keep our waters clean, slow the impacts of our changing climate, and provide people with access to nature. We strive to make our community program events and 19 nature preserves as inclusive and accessible as possible.



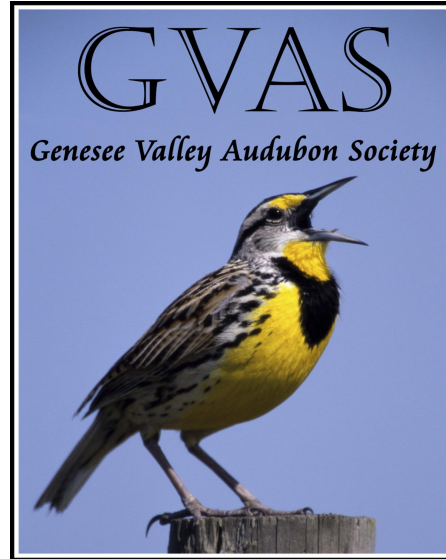
GENESEE
LAND TRUST

Festival of Inclusion

Genesee Valley Audubon Society

Website: www.gvaudubon.org Phone: 585-3551-824 Email: gvaudubon@gmail.com

Genesee Valley Audubon Society is an environmental conservation organization focusing on birds and the habitat they need. We also show people how they can enjoy birds responsibly and help them thrive.



Festival of Inclusion

GiGi's Playhouse Rochester

Website: <https://gigisplayhouse.org/rochester> Phone: (585) 563-7487 Email: rochester@gigisplayhouse.org

At GiGi's Playhouse all ages are welcome from prenatal- adults. The positive and uplifting environment of GiGi's Playhouse Rochester will empower those individuals with Down syndrome and their families to reach their highest potential. GiGi's Playhouse custom, researched-based curriculum works towards advancing Literacy, Math Skills, gross and fine motor skills, improving low muscle tone, building self-esteem preparing for the workforce and more while fostering acceptance, awareness and networking resourcing for parents, siblings and the community. All programs are FREE of charge and: cost will not be a barrier to achievement.

GiGi.
PLAYHOUSE

Down Syndrome Achiever
educate. inspire. believe

Rochester, N

Festival of Inclusion

Golisano Institute for Developmental Disability Nursing

Website: <https://www.sjf.edu/institutes/golisano-institute/> Phone: 585-385-5258 Email: [golisoano institute@sjf.edu](mailto:golisano_institute@sjf.edu)

The Golisano Institute transforms the quality of care and support for individuals with intellectual and developmental disabilities (IDD) regionally, nationally, and internationally by training nursing professionals in field-specific skills and knowledge.



Festival of Inclusion

Golisano Restorative Neurological Rehabilitation Center at Rochester Regional Health

Website: <https://www.rochesterregional.org/services/golisano-restorative-neurology-rehabilitation-center>
Phone: 585-336-3600 Email: Maria.Anderson@Rochesterregional.org

Recovering from a major illness, surgery, or injury can be a challenging journey, but our inpatient rehabilitation services are here to help every step of the way. The Golisano Restorative Neurology & Rehabilitation Center is dedicated to providing comprehensive care for people recovering from a wide range of conditions, helping them build strength and confidence as they prepare to return to everyday life. Our state-of-the-art facility ensures that you or your loved one will receive the highest quality of care in a comfortable and supportive environment.

Festival of Inclusion

Health Pozitive

Website: www.healthpozitive.com Phone: 585-471-8052 Email: info@healthpozitive.com

Health Pozitive is dedicated to improve medication adherence, with its main product being MediTeddi, a medication reminder bear.



MediTeddi

Remind.Track.Inspire!

Festival of Inclusion

Heritage Christian Services

Website: www.heritagechristianservices.org Phone: 585-340-2000 Email: kzanghi@heritagechristianservices.org

We offer everything from residential and day services to home respite, community habilitation, Self-Direction, CDPAP and more!



Festival of Inclusion

Heritage Christian Stables

Website: heritagechristianstables.org Phone: 585-872-2540 Email: stablesrider@heritagechristianstables.org

Heritage Christian Stables provides safe and inclusive equine assisted services to all community members interested in learning more about horses and horsemanship.



Festival of Inclusion

Hillside

Website: www.hillside.com Phone: 585-256-7500 Email: info@hillside.com

Hillside provides community-based services, education, and residential treatment to positively impact lives, in partnership with youth and families who have experienced trauma.



Festival of Inclusion

Holy Childhood

Website: www.holychildhood.org Phone: 585-359-3710

Holy Childhood is a non-profit, non-denominational agency, which serves more than 200 people with intellectual and developmental disabilities, in its School Program (ages 5-22) and in its Adult Program, which serves people from age 21 through retirement. Services include individualized education, vocational training, transition and skills training, supported employment and diagnostic and treatment services.

Holy Childhood
Inspiring

Festival of Inclusion

Homesteads for Hope

Website: <https://www.homesteadsforhope.org/> Phone: 585-352-4673 Email: info@homesteadsforhope.org

Homesteads for Hope is a 501c3 non-profit Community Farm and Future Housing Village nestled on 55 acres along the wide waters of Historic Erie Canal in Rochester, NY. We are dedicated to nurturing an inclusive community where individuals with disabilities and other disadvantages thrive, finding purpose and belonging through the transformative power of agriculture. Through our Community Farm experience, we strive to empower individuals with disabilities by providing meaningful opportunities for skill development, social engagement, and personal growth.



Festival of Inclusion

Krystal's Dance Centre

Website: <https://www.kndancecentre.com/> Phone: 585-259-8242 Email: Krystalsdancecentre@gmail.com

Provides Dance Classes for students ages 3 Years old through adults. Classes such as Ballet, Tap, Jazz, Lyrical, Contemporary, Danspirations and Hip Hop.



Lifetime Assistance

Website: lifetimeassistance.org Phone: 585-426-4120

We are a dedicated, hands-on partner providing supports and services for people with intellectual and developmental disabilities to help them achieve their full potential and to be fully immersed in our community. Whether it's getting a job in the career field of their choice, living as independently as possible, or leading a healthy and happy life, these goals are reached because we reach them together. By combining our expertise and training with a deep understanding of each person's specific desires and needs, we can facilitate person-centered plans that will best foster independence, dignity and success.

Lifetime 
Assistance

Festival of Inclusion



Lollypop Farm, Humane Society of Greater Rochester

Website: www.lollypop.org Phone: 585-223-1330 Email: info@lollypop.org

Lollypop Farm, the Humane Society of Greater Rochester, has been helping animals and people since 1873. Support from the community enables around 150 staff members and more than 1000 volunteers to care for around 10,000 animals each year and makes possible a variety of programs to address issues that contribute to the surrender of unwanted animals.

Humane Education promotes kindness, develops empathy, and cultivates compassion toward animals, people, and the natural world. Lollypop Farm empowers individuals to gain the knowledge and tools to make informed, socially responsible choices to better the lives of animals in our community.

Why does Humane Education matter?

- Prevents animal cruelty and neglect
 - Reduces violence by addressing "the link"
 - Cultivates social-emotional learning skills
 - Empowers people of all ages to take action on behalf of animals
 - Promotes social justice and environmental ethics
 - NYS law mandates humane education be taught in elementary schools
- <https://www.nysenate.gov/legislation/laws/EDN/809>

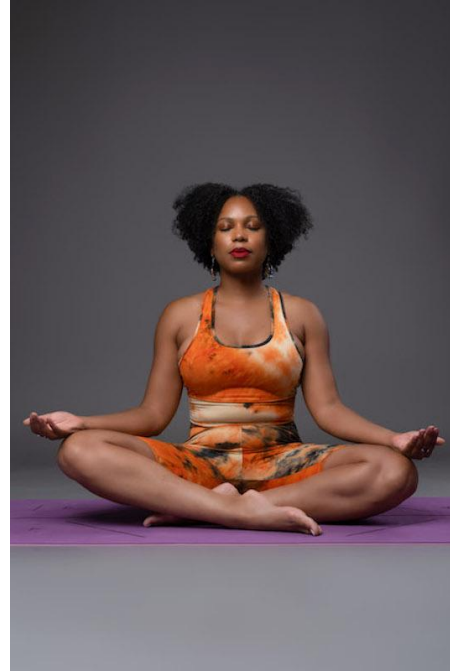


Festival of Inclusion

Love, Light & Yoga LLC

Website: <https://linktr.ee/lovelightandyogallc> Phone: 585-319-9396 Email: lovelightyogallc@gmail.com

Love, Light & Yoga LLC specializes in Vinyasa yoga, meditation, mindfulness, and wellness workshops, offering a holistic approach to mental, physical, and emotional well-being. Our practices help reduce stress, support mental health, and enhance clarity, while also improving flexibility, strength, and balance - empowering individuals to cultivate a healthier and more mindful lifestyle.



Festival of Inclusion

Mary Cariola Center

Website: www.marycariola.org Phone: 585-271-0761 Email: info@marycariola.org

Mary Cariola Center educates and cares for individuals with intellectual developmental disabilities and medical complexities, ages 3 through 22. Cariola operates a preschool and school located on three campuses as well as six residential group homes through Monroe County.



Transforming lives of people with disabilities



Festival of Inclusion

Monroe One Educational Center

Phone: 585-387-3883 Email: Andrea_rock@boces.monroe.edu

Monroe One is a cooperative educational center that services students with special needs for our component school districts.

Festival of Inclusion

NavigateMD

Website: www.navigatemd.com Phone: 1-888-898-0230 Email: Info@navigatemd.com

NavigateMD is an all-in-one online resource platform for individuals with disabilities, their families, and others to find relevant resources (such as medical providers, non-profit organizations, inclusive community events/recreational opportunities, and businesses that offer services or products for those with disabilities). Our mission is to cultivate a more inclusive and accessible community.



Festival of Inclusion

Nazareth Best Buddies

Website: bestbuddieswny.com

An organization that promote inclusion to individuals with IDD and creates one-one friendships and life opportunities.



Festival of Inclusion

NYS Department of Environmental Conservation

Website: www.dec.ny.gov Phone: 315-314-0768 Email: region8@dec.ny.gov

Tabling of accessible outdoor recreation information, Conservationist for Kids magazines, and other environmental and nature-based information in the Monroe County & 10 surrounding counties.



Festival of Inclusion

NYS Office of Parks, Recreation & Historic Preservation

Website: <https://highfallsstateparkny.com/> Phone: (585) 493-3600 Email: highfallsstatepark@theolinstudio.com

The Highland Planning team is supporting NYS Office of Parks, Recreation & Historic Preservation with community engagement related to the design of the new High Falls State Park located in downtown Rochester and centered around the iconic High Falls and Genesee River. Our team will have up to four (4) banners that are approximately 2.5 feet wide and 6 feet tall that include information about High Falls State Park to build awareness about the park and solicit community input. To gather input, the banners will include prompts asking the community to share the stories they think should be told at High Falls State Park, and what activities they would like to do in the new state park. We will also have a kids activity where children are invited to draw the activity they'd most like to do or the animal they hope to see in the new state park.



New York State
Parks, Recreation and
Historic Preservation

Festival of Inclusion

Parent to Parent of NYS

Website: <https://www.ptopnys.org/> Phone: 518-381-4350 Email: info@ptopnys.org

Parent to parent helps parents of special needs children/ adult child connect with each other & have a free, non judgment place to connect with other parents or professionals on a personal level for free. We offer resources, guidance, & support for free to the the special needs community all though out NYS in our diffident offices though NYS.



Festival of Inclusion

Parents Helping Parents Coalition of Monroe County

Website: Parentshelpingparentsmonroe.com Phone: 585-490-3334 Email: parents helpingparentsmonroe@gmail.com

Our mission is to support families caring for children with intellectual and developmental delays and disabilities to navigate some of the early challenges, including seeking and/or receiving a new diagnosis and securing crucial supports, such as early intervention and preschool special education services. It takes a village and we strongly believe no one should walk this journey alone.



Festival of Inclusion

Person Centered Services

Website: <https://personcenteredservices.com/> Phone: 888-977-7030 Email: customerservice@personcenteredservices.com

Person Centered Services is a Care Coordination Organization for people with intellectual and developmental disabilities of all ages. Our job is to help people and their families navigate a very complex system of services and supports.

At the heart of Care Coordination are connections and referrals that provide positive outcomes. Person Centered Services' Care Coordinators work continuously with people, their families, community providers and organizations to make sure the dots are connected between all aspects of a person's care.

People with intellectual and developmental disabilities may be eligible for supports and services from New York State's Office for People with Developmental Disabilities, and therefore eligible for Care Coordination.

If eligibility is not yet granted, our Intake Specialists can help with the eligibility process. Care Coordinators support individuals with a qualifying condition.



PERSON
CENTERED
SERVICES

Festival of Inclusion

Pittsford Interact Clubs

Website: pittsfordrotaryclub.org Phone: 585-455-6152 Email: pjmallery@aol.com

The Pittsford Mendon and Sutherland High School Interact Clubs are youth service organizations sponsored by the Rotary Club of Pittsford. The clubs are very active with inclusive membership.



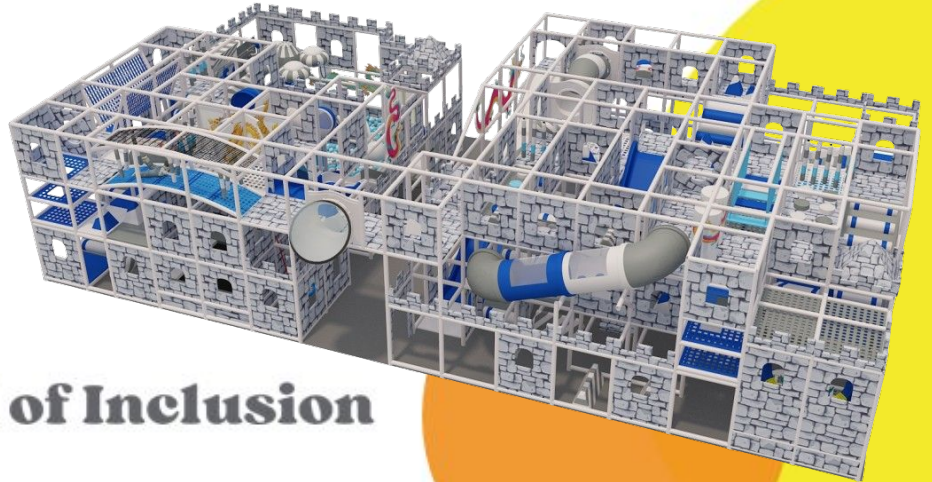
Festival of Inclusion

Play Palace

Website: www.rocplaypalace.com Phone: 585-786-1849 Email: rocplaypalace@gmail.com

Play Palace is more than just an indoor playground – it's a dream come true for families seeking a truly inclusive and joyful experience. Opening by April 1st, Play Palace is designed to cater to individuals of all ages and abilities, ensuring everyone feels welcome and can thrive.

Imagine a space where children can explore a giant play structure, immerse themselves in sensory rooms, and celebrate special occasions in a dedicated party room. But it's not just about the amazing features – it's about the feeling of belonging. Our entire facility is designed with sensory sensitivities in mind, and our specially trained staff is dedicated to creating a safe and supportive environment where every guest can Dream. Play. Thrive.

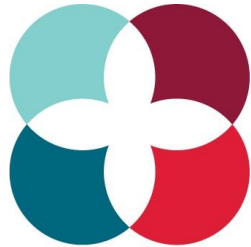


Festival of Inclusion

Prime Care Coordination

Website: primecareny.org Phone: 1-844-347-3768 Email: jane.stamler@primecareny.org

PCC is a Care Coordination Organization supporting children and adults who have ID/DD, with OPWDD eligibility and Care Management in their community.



Prime Care Coordination

Festival of Inclusion

Renew Hope and Healing

Website: www.renewhopeandhealing.com Phone: 585-398-8835 Email: hello@renewhopeandhealing.com

We are a large mental health group in Rochester with many private practice clinicians seeing a wide range of clients around NYS. We have 4 physical office locations as well as a telehealth community. We are dedicated to creating a new landscape of mental health, allowing our clients to be stronger to give and receive love. Our clients are generally seen within 7 days of contacting us. They also benefit from a personalized matching process to ensure they're seeing a clinician who can fit their needs. We also accept insurance.



Festival of Inclusion

RIT Archives StoryBooth

Website: <https://www.rit.edu/archives/> Phone: (585) 475-2557 Email: ritarchive@rit.edu

Rochester Institute of Technology (RIT) Archives collects and makes accessible physical and digital materials relating to the rich history of RIT, Deaf culture and history, artwork by RIT alumni, faculty, and students, and other special collections. Through physical and digital exhibits, teaching, and public programming, we seek to creatively and innovatively engage the RIT community and beyond with the collections under our care.

We are vehemently committed to collecting and making accessible diverse histories and lifting up untold, non-traditional narratives. In Fall 2022, we created the RIT Archives StoryBooth initiative to invite members of our community to share their knowledge, memories and experiences for RIT's historical record. Everyone has a story to share, and together we can ensure more inclusive representation for generations to come.



Festival of Inclusion

RocDog, Inc.

Website: www.rocdog.org Phone: 585-978-0970 Email: office@rocdog.org

Therapy Dog Group providing support to our community and assisting Special Needs families
get and train dog for the families



Festival of Inclusion

Rochester Accessible Adventures

Website: www.RochesterAccessibleAdventures.org Phone: 585-491-6011 Email: RAA@RochesterAccessibleAdventures.org

Rochester Accessible Adventures (RAA) celebrates 10 years of making inclusion happen! We started this organization to tackle a critical issue: the stark divide in access to health and wellness activities for individuals with disabilities. Families found themselves sidelined, unable to join in the same community programs as their peers, simply because those programs weren't equipped to meet their needs.

But now, thanks to RAA, a groundbreaking change is underway! With our innovative model of inclusion services, we are not just breaking down barriers—we're transforming entire communities into spaces where everyone can thrive together, regardless of ability. Join us as we reshape the landscape of inclusion and empower countless individuals to experience active recreation alongside their families and friends.

RAA provides a unique model of services that

- a) mentors businesses to operate with full inclusion,
- b) collaborates with organizations to develop meaningful and long-lasting changes in our communities, and
- c) connects individuals, families, and provider organizations to work together to match people to accessible and inclusive recreation, sports and tourism opportunities.

Check out our Inclusion Partners and get ready for new adventures!

We welcome you to connect with us and be a part of making inclusion happen!

Festival of Inclusion



Rochester Alternative Baseball

Website: www.rochesteralternativebaseball.org Phone: 585.317.0744 Email: Brian.okeefe@rochesteralternativebaseball.org

Rochester Alternative Baseball Inc. (RABI) is a Section 501(c)(3) charity with the mission of promoting the sport of baseball by providing authentic baseball experience for those who are neurodivergent and/or living with physical and mental disabilities, as well as friends and families wishing to share that experience with them.



Festival of Inclusion

Rochester Hearing and Speech Center

Website: rhsc.org Phone: 585-271-0680 Email: info@rhsc.org

Rochester Hearing & Speech Center is the most experienced and longest-standing provider of hearing, speech-language, clinical, and developmental services in the greater Rochester area.



Festival of Inclusion

Rochester Rookies Adaptive Track and Field

Website: <https://therochesterrookies.org/> Phone: 585-301-1144 Email: ryan@chalmersgroup.org

The Rochester Rookies is a wheelchair and ambulatory sports program (adaptive sports) dedicated to enhancing the quality of lives by teaching athletic skills, fostering independence, building character and helping families realize their child's full potential through programs, advocacy and services.

The program seeks to provide individuals the opportunity to engage in physical fitness activities and socialization. Adaptive Sports, Rochester NY

The Rochester Rookies was founded in 1976 by Paralympic Gold Medalist, Jo Ann Armstrong. The team is an affiliate of Adaptive Sports USA. The Rookies have an eight-month training season (September - November and February - June). Practice is held on Saturdays, 12:00 PM - 2:00 PM.



Festival of Inclusion



Rochester Rotary Sunshine Camp

Website: www.sunshinecamp.org Phone: 585-533-2080 Email: Brandi@rochesterrotary.org

Since 1922, Rochester Rotary Sunshine Camp has provided a summer camp where children with disabilities can simply have fun, without any barriers. Today, this 157-acre camp in Rush, N.Y. meets the needs of thousands of children with disabilities and their families. Every year, more than 2,500 kids get the chance to enjoy a camping experience that they cannot get anywhere else.

Pretty much any activity a child wants to do at summer camp is here. A climbing wall ... splash pad ... archery ... boating ... fishing ... mini golf ... swimming ... arts and crafts ... digital photography ... music ... nature trails ... and other sports. One of the most exciting adventures for many kids is riding the zipline through the woods. The newest attractions are “My Treehouse” and the Gizzi Family Sensory Center, which features a variety of activities to stimulate the visual, hearing, smell, touch and taste senses.

While at the camp, kids with disabilities get the chance to just be kids. And their parents get a much-deserved respite as well.

Festival of Inclusion

Rochester Special Hockey

Website: www.rochesterspecialhockey.org Phone: 585-208-4182 Email: rochesterspecialhockey@yahoo.com

Our mission is to provide training in ice hockey for players of all abilities including those with intellectual, developmental, cognitive and physical disabilities in Rochester, NY and the surrounding counties. Players will experience exciting fun while learning new skills assisting with developing and enhancing skills, focused on individual responsibility, team work, improving athletic skills, socialization/communication all the while of providing the value of therapeutic activity.



Festival of Inclusion

School of Rock

Website: <http://rochesterny.schoolofrock.com> Phone: (585) 400-7625 Email: rochesterny@schoolofrock.com



School of Rock is a music school for all skill levels, ages, and musical aspirations. With students ranging from toddlers to adults, School of Rock is where music students grow into real musicians.

SCHOOL OF ROCK
ROCHESTER, NY

**ADAPTIVE MUSIC
LESSONS AND CLASSES**

Private Instruction
Group Classes
All Abilities Welcome!

CALL (585) 400-7625

235 High St Ext STE 4, Victor, NY 14564

A heart shape composed of colorful puzzle pieces in shades of blue, green, yellow, and red.A green ribbon icon with silhouettes of people, including one in a wheelchair, representing accessibility and inclusion.

Festival of Inclusion

Seneca Park Zoo Society

Website: <https://senecaparkzoo.org/> Phone: 585-336-7200 Email: kbracken@senecazoo.org

Rochester's local AZA accredited zoo.



Festival of Inclusion

Special Olympics New York

Website: <https://www.specialolympics-ny.org/> Phone: 518-388-0790 Email: rheard@nyso.org

Special Olympics New York provides year-round sports training and athletic competition in a variety of Olympic-style sports for children and adults with intellectual disabilities, giving them continuing opportunities to develop physical fitness, demonstrate courage, experience joy and participate in a sharing of gifts, skills and friendship with their families, other Special Olympics athletes and the community. While we are a sports organization, we also have a wide variety of health programs to support and advocate for our athletes and their overall quality of life.

***Special
Olympics***
New York



Festival of Inclusion

Special Olympics New York - Genesee Region

Website: <https://www.specialolympics-ny.org/> Phone: (585) 586-7400 Email: rheard@nyso.org

Special Olympics New York provides year-round sports training and athletic competition in a variety of Olympic-style sports for children and adults with intellectual disabilities, giving them continuing opportunities to develop physical fitness, demonstrate courage, experience joy and participate in a sharing of gifts, skills and friendship with their families, other Special Olympics athletes and the community.



***Special
Olympics***
New York

Festival of Inclusion

Spencer Special Needs Consulting Services

Phone: 585-313-2336 Email: jenspencer18@gmail.com

A one stop shop for families as they navigate the transition of their children to adulthood by providing support brokering, housing navigation, benefits advising, and life skill classes.



Spencer Special Needs Consulting Services

EMPOWERING UNIQUE JOURNEYS

Festival of Inclusion

Spotted Rabbit Creative Arts Therapy

Website: <https://spottedrabbitstudio.com/> Phone: 585-430-9877 Email: info@spottedrabbitstudio.com

Spotted Rabbit offers creative arts therapy and visual arts classes to youth and adults of all ages. We specialize in working with neurodivergence, LGBTQ+ and complex trauma.



Festival of Inclusion

Starbridge

Website: www.starbridgeinc.org Phone: 585-546-1700 Email: marketing@starbridgeinc.org

Our mission at Starbridge is to transform communities to include everyone by partnering with people with disabilities, their families and those who support them. Our vision is to ensure every person has the right to define and lead a fulfilling life.



For the Hope and the How

Festival of Inclusion

Stony Point Art Studio

Website: www.stonypointartstudio.com Phone: 585-503-8771 Email: stonypointartstudio@gmail.com

Stony Point Art Studio invites you to explore your creativity through a diverse range of inclusive small group studio art classes designed for both adults and children. The studio is a space where artistic expression flourishes in a warm and supportive environment.



Festival of Inclusion

Strike Back Martial Arts

Website: www.strikebackmartialarts.com Phone: 585-544-5637 Email: strikebackmartialarts@gmail.com

Strike Back Martial Arts provides training programs tailored for students, regardless of their age, sex, size and skill, which will meet their needs for functional self-protection. Through this program, students will learn discipline, develop strength and gain self-confidence.

Strike Back Martial Arts offers adaptive classes for kids, teens and adults in the areas of Autism, Down Syndrome as well as other developmental disabilities. Strike Back has worked with organizations such as AutismUp, Flower City Down Syndrome and Best Buddies NY and is a proud member of the Adaptive Martial Arts Association.



Festival of Inclusion

Student Success Project

Website: <https://www.facebook.com/groups/1269123673684188> Phone: 585-484-1105 Email: hello@studentsuccessny.org

We are parents experienced in helping families pursue their children's educational success. Parents are the most important members of their children's educational team; they are the experts and champions. You and your child have educational rights, and we will provide you with knowledge, tools, and confidence to exercise those rights and secure the services your child needs to succeed in school. Our support is tailored to your unique needs. We offer 1-1 coaching, resource connection, parent and community groups specific to your child's needs, CSE and school meeting preparation, resource mapping, and more. We can also directly connect you to The Norman Howard School and EnCompass: Resources for Learning.



Festival of Inclusion

Syracuse University's InclusiveU

Website: <https://taishoffcenter.syr.edu/inclusiveu> Phone: 315-443-4058 Email: taishoffcenter@syr.edu

InclusiveU brings students of all ages with intellectual and developmental disabilities who want to experience college life in a fully inclusive setting to Syracuse University. We offer REAL opportunities for our students to participate in every aspect of campus life. SU coursework, sporting and social events, and our strong, inclusive community are what makes InclusiveU a success. Syracuse University is known all over the world as a leader in disability and higher education. At SU, we celebrate disability because it makes our campus stronger, more diverse, and much more interesting; until everyone is included, there is no real inclusion for anyone. InclusiveU is an initiative of the Taishoff Center for Inclusive Higher Education, committed to individualized and inclusive higher educational opportunities for students with intellectual and developmental disabilities.

INCLUSIVEU

Festival of Inclusion

The Arc Chemung-Schuyler

Website: www.arcofcs.org Phone: 607-734-6151 Email: info@arcofcs.org

The Arc Chemung-Schuyler is a family based organization, providing supports to people with varying abilities. We create opportunities for individual growth, while emphasizing choice. Our passion for excellence is evidenced by our family and community partnerships, quality supports, education, and advocacy.



Festival of Inclusion

The Arc of Monroe

Website: mfico@arcmonroe.org Phone: 585-271-0660 Email: outreach@arcmonroe.org

The Arc of Monroe is an Adult Service Provider Agency with almost 70 years of supporting people with intellectual and developmental disabilities (IDD), covering the Monroe County Area.



Festival of Inclusion

The Arc Ontario

Website: www.thearcontario.org Phone: 585-394-7500 Email: contact@ontarioarc.org

Our primary goal is to promote opportunity and independence for people with disabilities or other challenges. We achieve this with over 40 services, but even more so through the complete respect and guidance we give families as they begin this life journey.



Festival of Inclusion

The Arc Wayne

Website: <https://arcwayne.org/> Phone: 315-331-7741 Email: public.relations@arcwayne.org

The Arc Wayne, a parent-based organization, advocates for and serves persons of all ages with or without special needs. The agency assists individuals in taking their full, independent, productive place in society through an array of quality, individualized services.



Wayne
New York

Festival of Inclusion

The Child Advocacy Center of Greater Rochester

Website: <https://www.cacgroc.org/> Phone: 585-935-7800 Email: info@cacgroc.org

As the premier Child Advocacy Center in the Greater Rochester Region, we are dedicated to giving children a voice and putting an end to abuse. Our comprehensive services offer support to children and families to help provide healing, education, and prevention.



The
**Child
Advocacy
Center**
of Greater Rochester

Festival of Inclusion

The Hochstein School

Website: <https://hochstein.org/> Phone: (585) 454-4596 Email: frontoffice@hochstein.org

The Hochstein School's mission is to provide people of all ages, backgrounds, and abilities with access to excellent music and dance education and therapeutic arts services in a community that nurtures and encourages personal enrichment and achievement.



Festival of Inclusion



The Legal Aid Society of Rochester, NY

Website: <https://www.lasroc.org/> Phone: 585.232.4090 Email: legalaid@lasroc.org

The Legal Aid Society of Rochester is a not-for-profit organization that provides direct civil legal services, including lay advocacy and related human services, to adults and children. We ensure that those who seek justice have an opportunity to receive a fair and full hearing. We obtain legal solutions that have a beneficial impact on our clients and the community.



The Legal Aid Society
of ROCHESTER, NEW YORK



Festival of Inclusion

Town of Victor Dept. of Parks and Recreation

Website: www.victoryny.gov/vpr Phone: 585-742-0140 Email: bemelson@townofvictoryny.gov

We are a public parks and recreation service and facility provider in Ontario County. We serve residents, non-residents as well as visitors to our area. We offer recreation programs for families, youth, adults and senior citizens.



Festival of Inclusion

Trillium Health

Website: www.trilliumhealth.org Phone: 585-545-7200 Email: kstein@trilliumhealth.org

Trillium Health offers affordable, high-quality primary and specialty care, including LGBTQ-affirming health care. Everyone who comes to us is treated with respect and dignity. We provide a sliding-fee discount, financial counseling, and insurance navigation so that finances are never a barrier to receiving care. Our services expand beyond primary care to include supportive services such as a large food pantry that makes monthly appointments, care management, pediatrics, gynecology, free HIV/STI testing, a transgender center of excellence and more!



Festival of Inclusion

UR Medicine - Sheftall Lab

Website: <https://www.urmc.rochester.edu/labs/sheftall> Phone: 585-694-7510 Email: Sheftall_Lab@URMC.Rochester.edu

At the Sheftall Lab, we seek to understand what factors are related to suicidal thoughts and behaviors in youth. We investigate the links between developmental risk factors, such as neurocognitive functioning, familial relationships, and suicidal thoughts and behaviors (STBs) in youth. We hope our research will inform youth suicide risk assessment and prevention.



Festival of Inclusion

URMC Developmental and Behavioral Pediatrics & The Strong Center For Developmental Disabilities

Developmental and Behavioral Pediatrics Website - <https://www.urmc.rochester.edu/childrens-hospital/developmental-disabilities>
Strong Center for Developmental Disabilities Website- <https://www.urmc.rochester.edu/strong-center-developmental-disabilities>
Phone: 585-275-2986 Email: rrcasd@urmc.rochester.edu

Developmental and Behavioral Pediatrics offers diagnostic evaluation as well as a range of medical and behavioral treatments for children with developmental delays and disabilities such as autism, cerebral palsy, spina bifida, and intellectual disability. The Strong Center for Developmental Disabilities develop partnerships, foster accessibility, translate research to best practice, and promote diversity and inclusion with and for people with intellectual and developmental disabilities in our community across the lifespan through education, employment, health equity, and inclusive play initiatives

Strong Center for Developmental Disabilities



UNIVERSITY of
ROCHESTER
MEDICAL CENTER

Festival of Inclusion

WXXI Public Media + Move to Include

Website: <https://www.wxxi.org/projects/move-to-include/> Phone: 585-258-0361 Email: sabbamonte@wxxi.org

WXXI is proud to be the home of Move to Include(TM), an award-winning national initiative to promote disability inclusion, representation, and accessibility in public media. Built on the principle of “Nothing About Us Without Us”, Move to Include spotlights the lived experience of people with disabilities and highlights important issues around disability, including education, healthcare, housing, employment, and more – through television, radio, news, education, community events, and digital media.



Festival of Inclusion



Thank You
to our 2025 Festival of Inclusion
Sponsors!



MARIA SPINELLI PHOTOGRAPHY
 @mgspin.fineart



A Special Thank You to the 2025
Supporters & Sponsors

greater rochester
Health *foundation*

Wegmans



Festival of Inclusion



**Festival
of
Inclusion
2025**